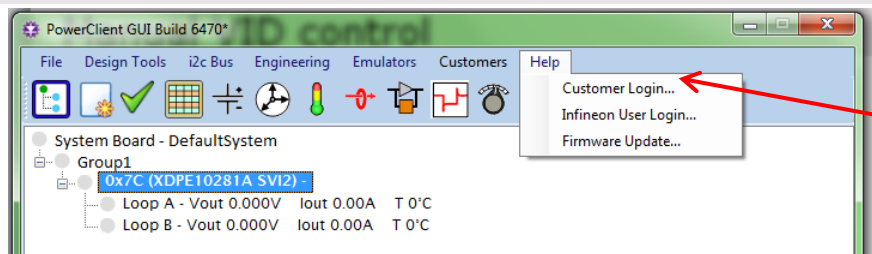
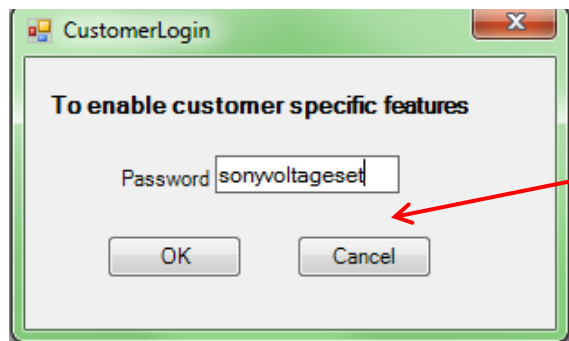


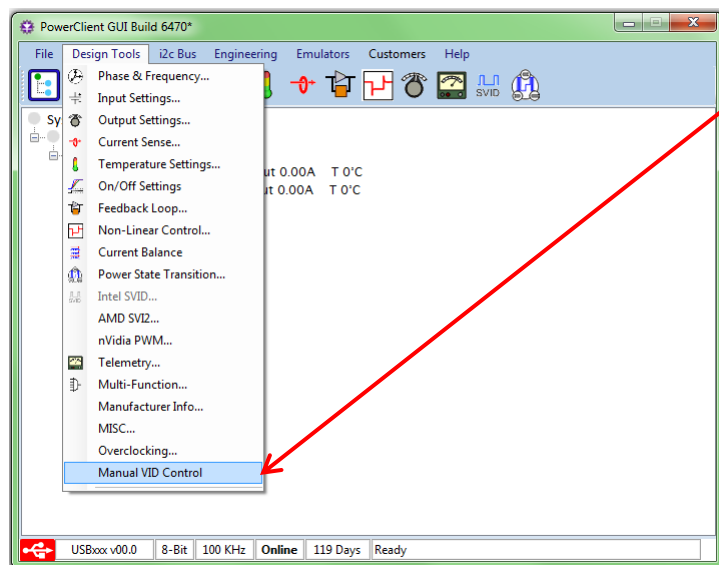
# SONY Manual VID control



To manually set an output voltage:  
In **Help** tab select **Customer Login...**

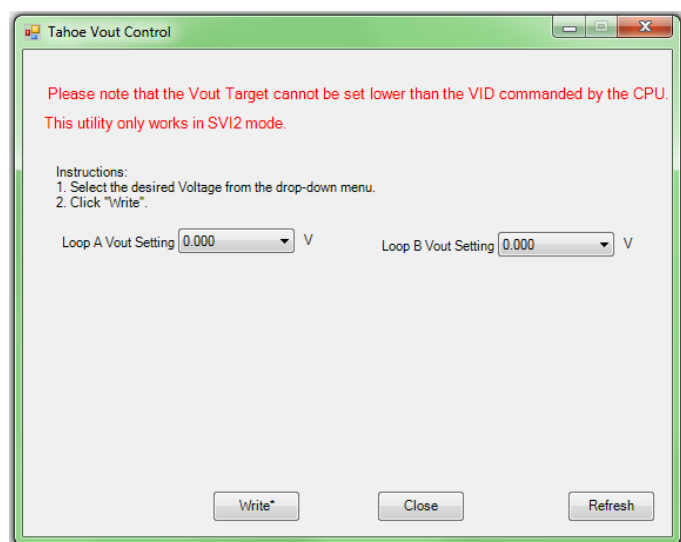


In the next window that opens enter the Password:  
**sonyvoltageset**  
And click OK button



From **Design tools** tab select **ManualVID control**

# SONY Manual VID control



This opens a window that allow manual selection of output voltage.

First select the wanted output voltage from the pulldown menus

When the Write button is clicked the settings are transferred to the powersupply

There are some limitations :

The available voltages are based on 2 factors: the VID commanded by the CPU and the VID Table.

It assumes there has been an SVI command to set voltage sent from CPU to Powersupply already. Which is the normal way an AMD processor do when powering up.

PowerClient was designed so that it would not allow a voltage lower than the VID commanded by the CPU. Only higher voltages can be set.

Also, this utility only works for SVI2 AMD mode.

When closing the window, the GUI will reset the Manual VID setting to 0V, which releases voltage control back to the CPU. Example: if voltage was 0.805V before adjusting the voltage manually it will go back to 0.805V when closing this window.